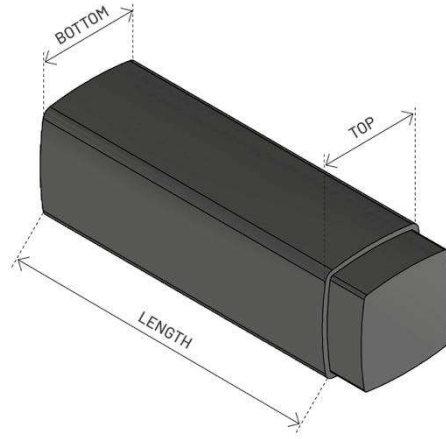


M2.06.01 rev.2 – 2nd January 2024.

Table of ingots dimensions and weights.

All weights and dimensions must be considered indicative.



Square Ingots

INGOT	SIDES n°	INGOTS PER HEAT		DIMENSIONS				TOTAL WEIGHT [kg]		WEIGHT WITHOUT TOP [kg]		BOTTOM WEIGHT [kg]
				TOP [mm]	BOTTOM [mm]	LENGTH [mm]						
						min	max	min	max	min	max	
Q470	4	10	12	480	470	1.720		3.100		2.880		N
Q600	4	6	8	590	590	1.690		4.800		4.370		N
Q730	4	4	6	750	750	1.460		6.870		6.150		N
Q830H	4	3	4	820	760	1.510	2.000	8.250	10.700	7.100	9.550	N
Q960H	4	2	3	1.020	910	1.470	2.030	12.500	16.770	10.350	14.620	N
Q1150H	4	1	2	1.200	990	1.840	2.430	20.480	26.650	16.710	22.880	100
Q1300H	4	1		1.320	1.230	2.140	2.720	30.000	37.800	26.100	33.900	500

The number of ingots is related to the total weight of the cast:

- Minimum melt weight = 26.600 kg
- Maximum AOD capacity = 40.000 kg

Different combinations of ingots or special requests of weight may be discussed with the Commercial Department.



ASONEXT

Steeled for the future

ASONEXT S.p.A. Società Benefit Unipersonale

Via Seriola 122 - 25035 Ospitaletto (BS) ITALY

P. +39030.6841011 - info@asonext.com

www.asonext.com